

Motech

Connect. Control. Ride.

INSTALLATION GUIDE GasGas

Plate Holder



Connect. Control. Ride.

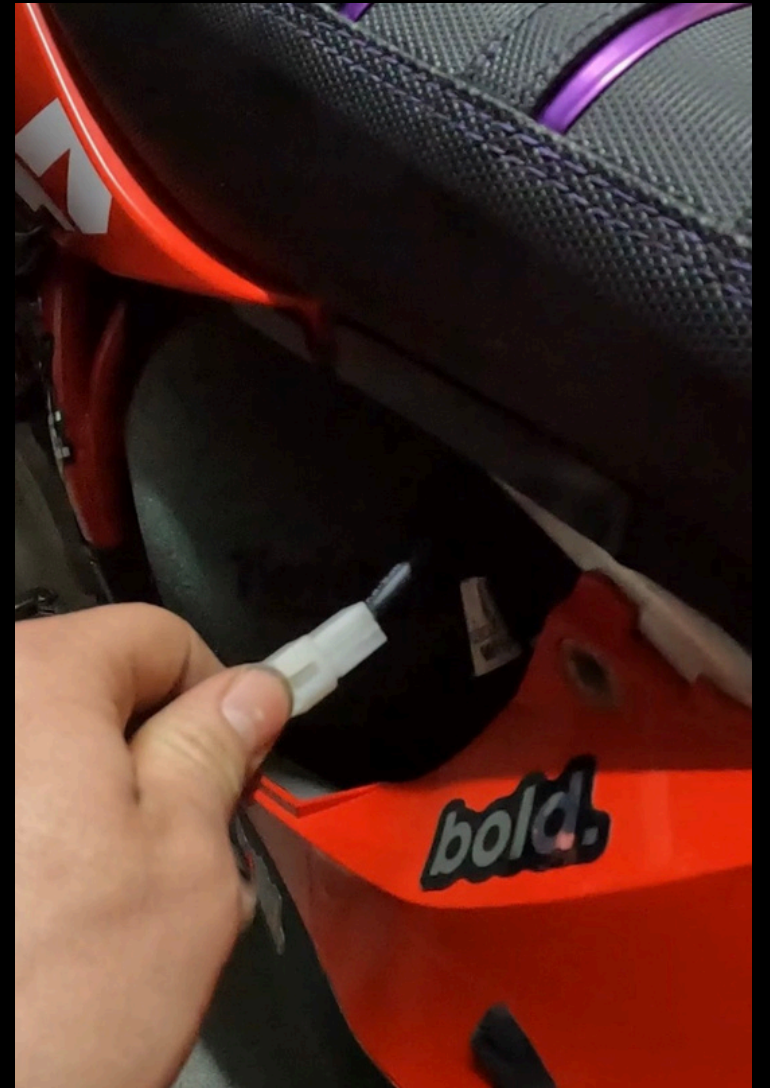
01

Download the Motech App to get started



02

Pull out the plug for rearlight and brakelight.



03

Mount the plate holder to the bike using the two screws.

Bracket installation is shown later.



04

Connect the cables.

Blue → Mass

Thick red → Power

Thin red →

Brakelight



05

Turn on your
bike. The lights
should turn
on.



06

Route the
cables under
the tank to the
handlebars.



07

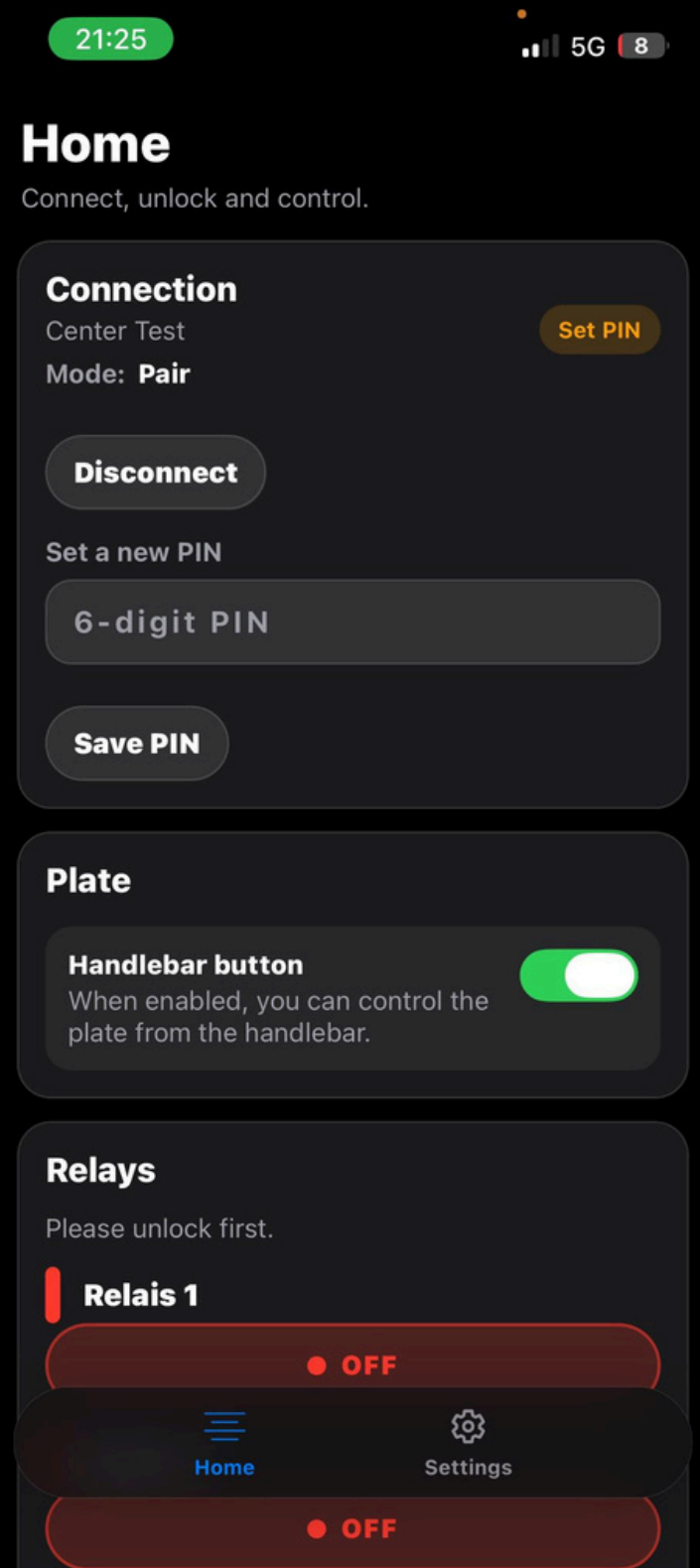
Mount the Button on the handlebars



08

After installing it on your bike turn on the power switch.

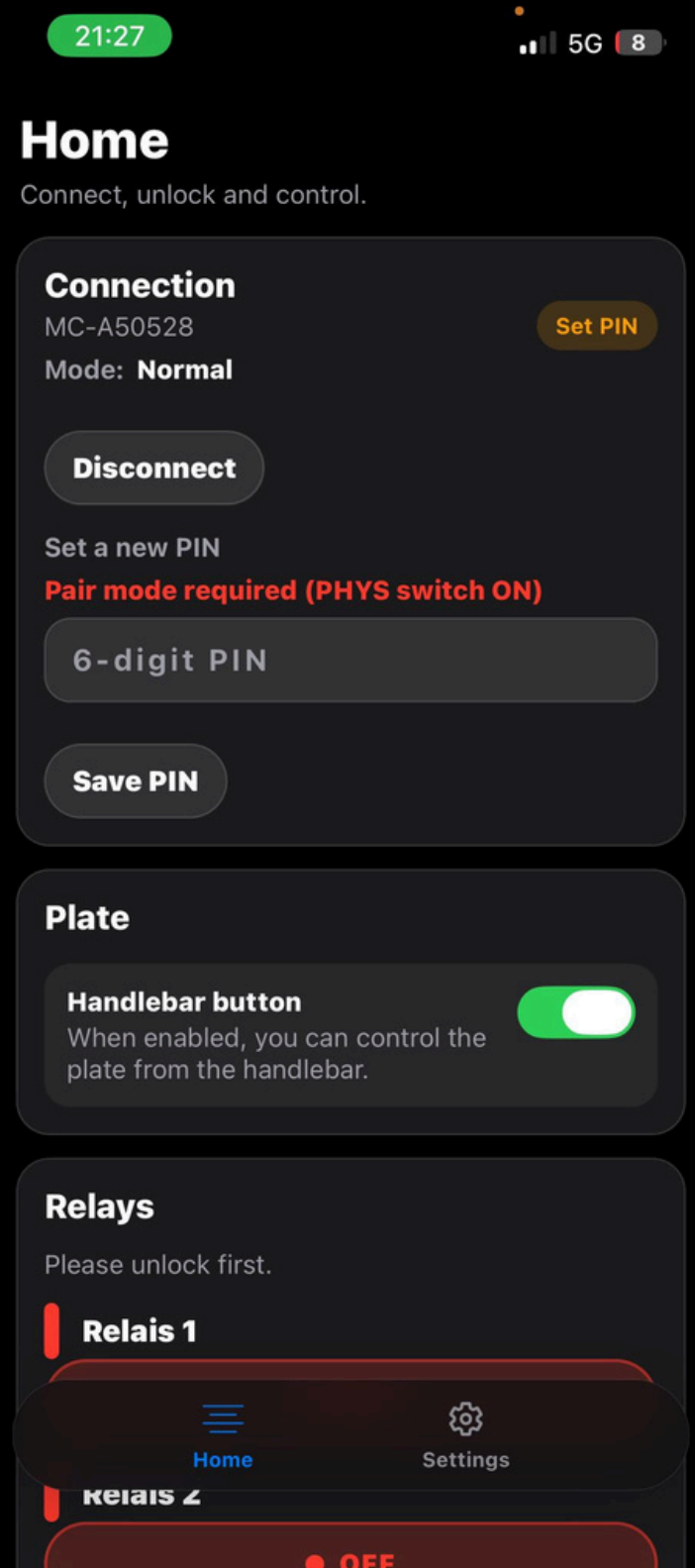
Open the Motech app. Connect the device.



08

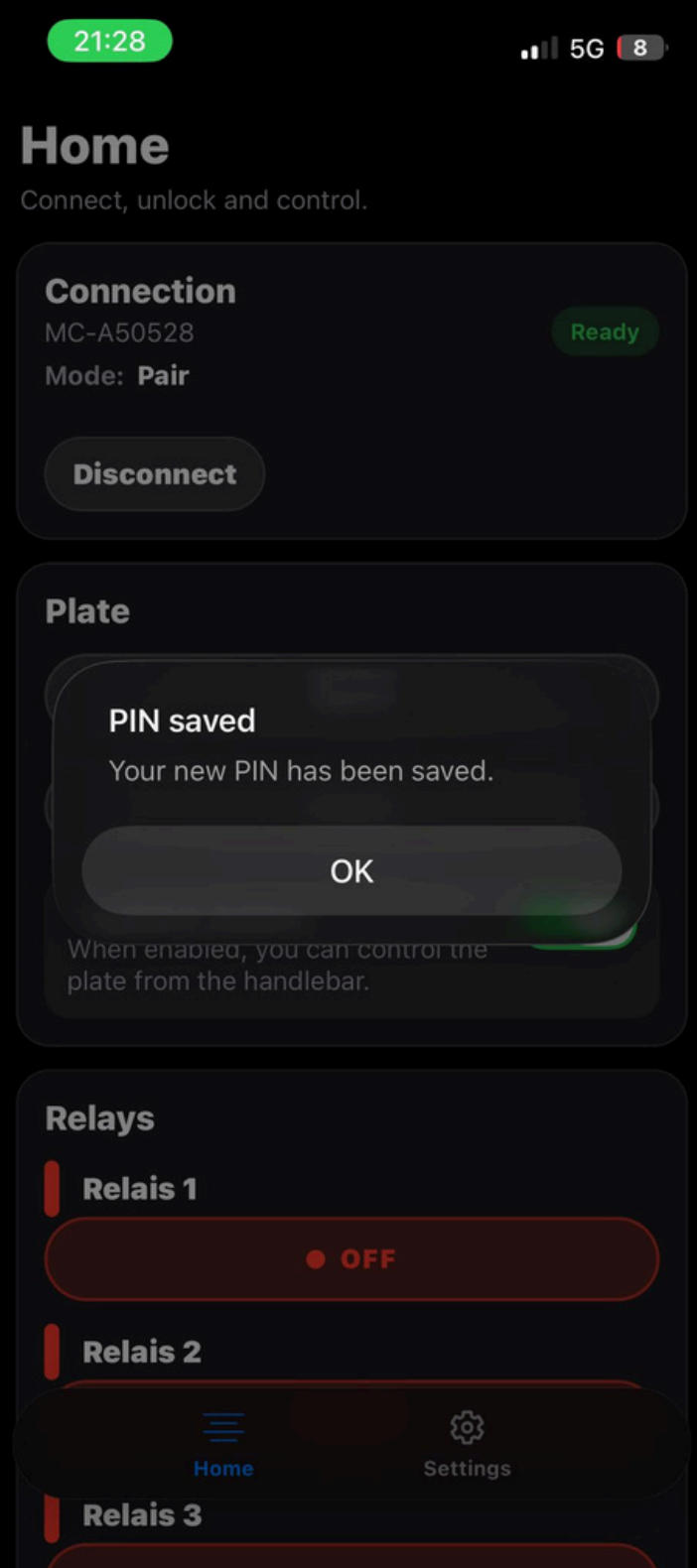
If this red message pops up, you have to Activate pairing mode. Set a new PIN in the app. Confirm the PIN to save it.

Keep the PIN safe. You will need it to unlock the device.



09

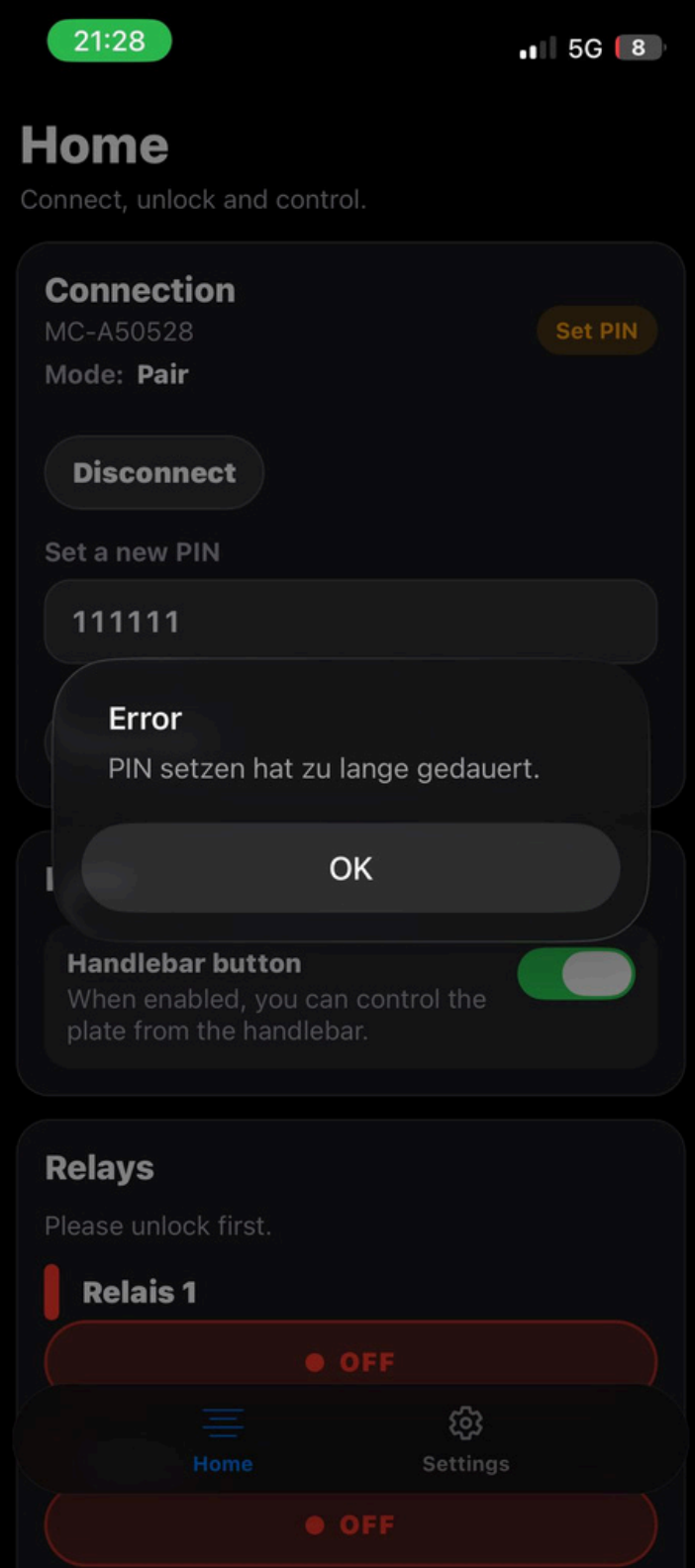
Check for the confirmation message in the app.



10

If you get this message disconnect the device.

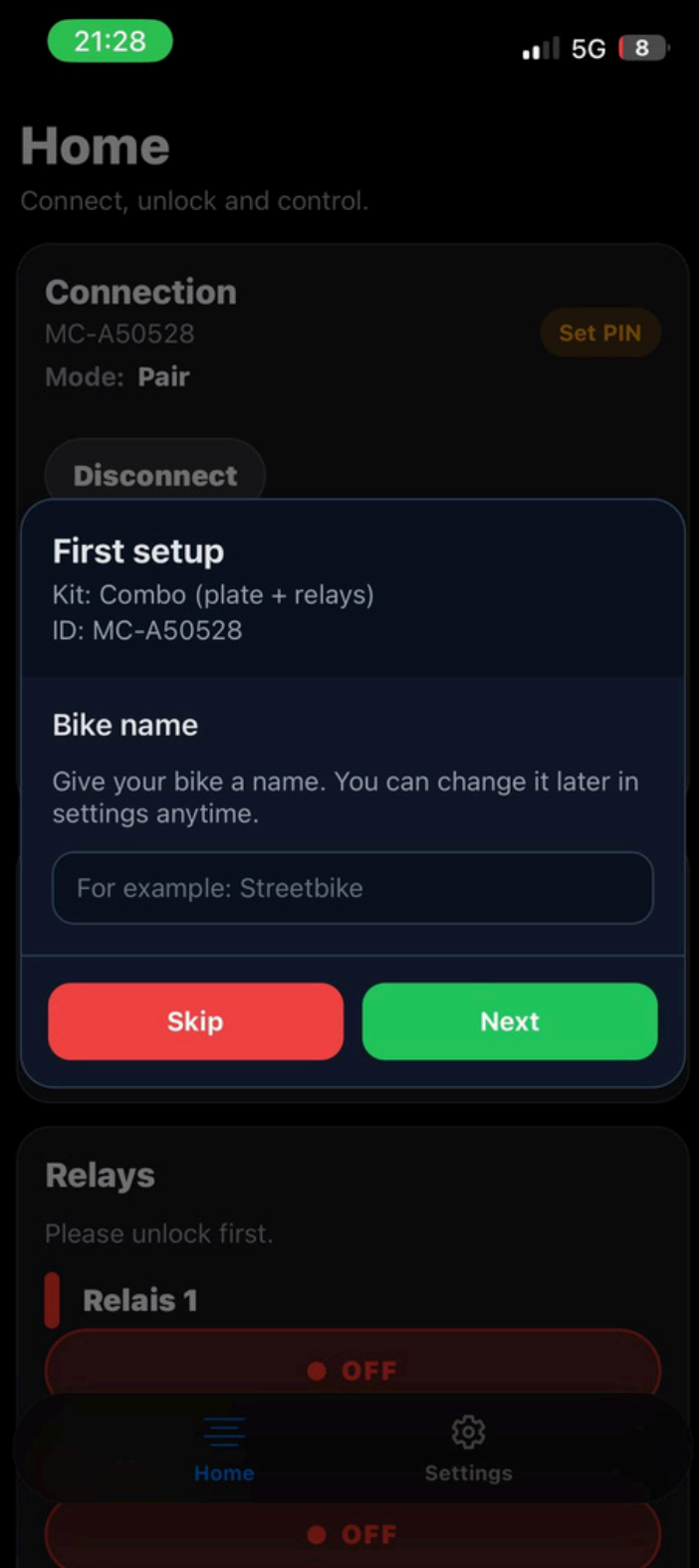
Turn the power off for 5 seconds. Turn it on and try again.



11

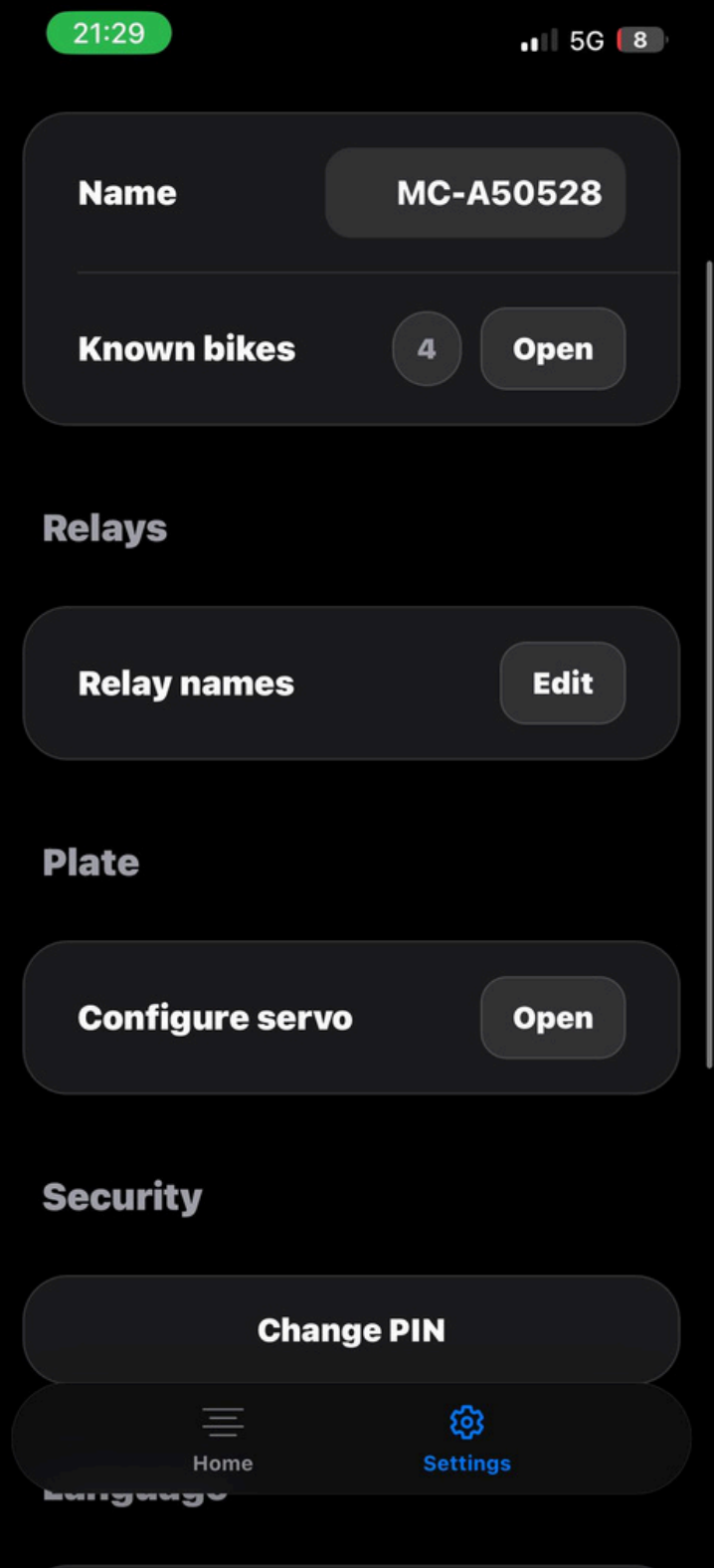
Name your device or tap "Skip".

You can change the name later in Settings.



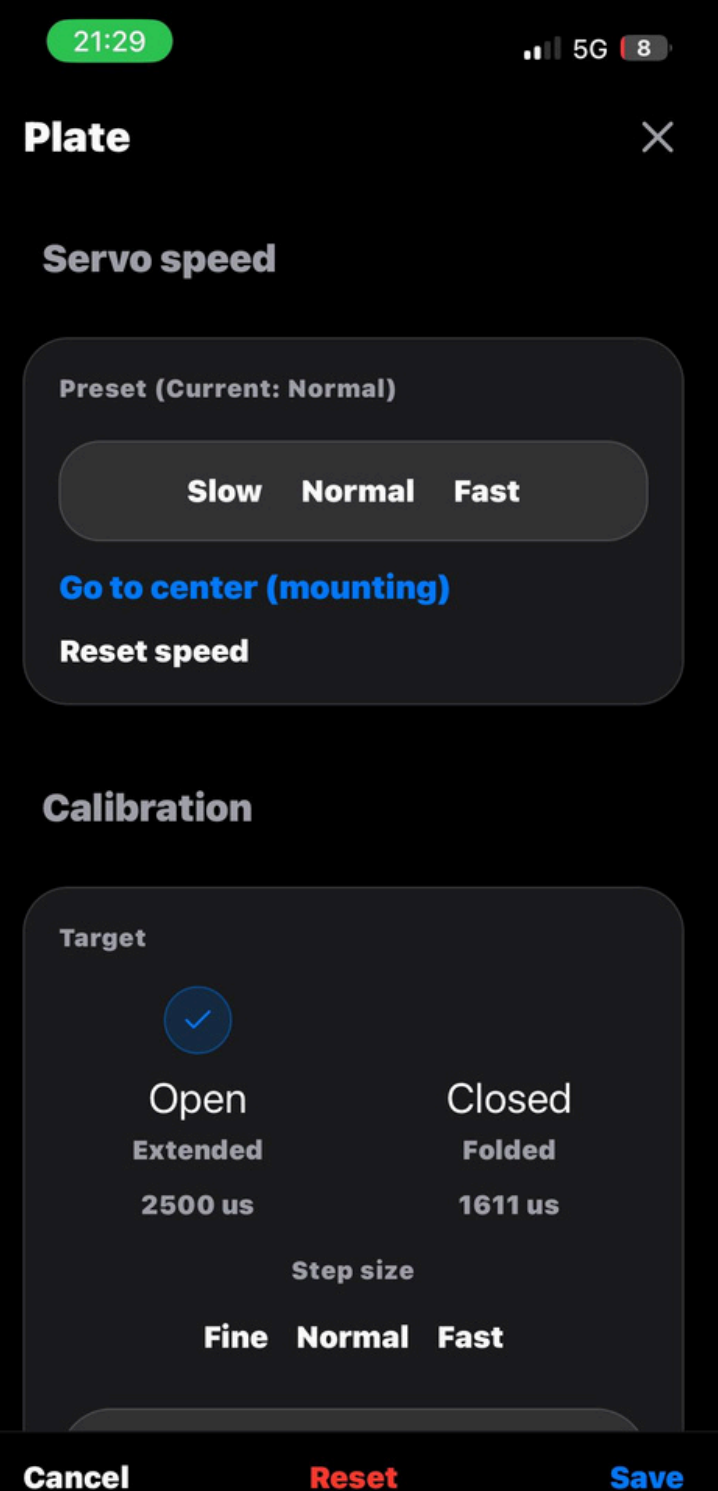
12

Open Settings in the app. Tap “Configure Servo” to calibrate the plate holder.



13

Tap “Go to center (mounting)”. Do not skip this step!



15

Tap “Open” and set the open position. Adjust the step size if needed.

Tap “Closed” and set the closed position. Adjust the servo speed as desired.

Tap “Save” to apply the settings.



16

The home screen is now ready. Use the app to open or close the plate. Enable or disable the handlebar button using the switch.

